

Tour Sound Products

Harman Pro Group | 2012

Section:

06



JBL VERTEC® Line Array Systems (VT4889, VT4880A) for
World's Largest Music Festival (Rock In Rio, Lisbon and Madrid)
Rental System Contractor: Gabisom



2269H
Ultra Long Excursion 18" Woofer



2166H
Long-Throw 6.5" Woofer



2435
Beryllium-Diaphragm, Neodymium
Magnet Compression Driver

Perhaps more than any other single company in the professional sound industry, JBL Professional, under the guiding wisdom of founder James B. Lansing, has shaped large scale forms of public entertainment we now take for granted. Through Mr. Lansing's development of revolutionary transducers and the resulting sound reinforcement technologies, concerts and special events of all types can now enjoy exceptional sound quality.

JBL has continued this tradition of revolutionary technology with VERTEC® line arrays – a flexible, high performance product line including subcompact, compact, midsize and fullsize line array elements and companion subwoofers, along with powered options equipped with JBL DrivePack® technology. It's the ideal solution to a broad range of sound reinforcement challenges for both portable rental inventories, and fixed performance-venues.



VERTEC® Series

JBL's early research into column-type line arrays nearly 40 years ago provides a solid foundation for VERTEC – Line arrays with lineage. Combining JBL's latest generation of high-powered lightweight transducers with proven line array theory, precisely-adjustable array elements and accurate prediction software, this industry-leading product line enables tour sound system operators, rental companies and performance venues to achieve predictable, consistent results.

All models in the VERTEC product line are engineered to offer sound reinforcement professionals solutions to meet nearly any challenge. Each model is compatible with others in the line, both mechanically and acoustically. With built-in advantages like lightweight construction, high output, and integral suspension hardware, each VERTEC model is designed to deliver premium-quality audio for a wide range of applications including concert touring, corporate A/V, and fixed installation in performance venues.

HIGH-PERFORMANCE FEATURES

Each model in the VERTEC system family features high performance technologies, engineered to work together to maximize utility and audio performance.

PlyMax® enclosure technology is used for constructing the VT4889-1, VT4888, VT4887A, VT4882, VT4881A and VT4880/80A systems. PlyMax offers rigid enclosure characteristics along with dramatic weight savings. The flagship model VT4889 features an advanced composite shell.

Advanced Transducers give each VERTEC system its performance edge. All models feature dual voice coil Differential Drive™ technology, providing unparalleled output capability for which VERTEC is legendary, while ensuring pristine, low-distortion audio reproduction.

Precision waveguides are coupled to the advanced-technology drivers to create an uninterrupted vertical 'ribbon' of high frequency energy in the full-range system.

Radiation Boundary Integrators™ for the midrange section of each system reduce diffraction effects and smooth high frequency coverage.

TOUR-READY SYSTEMS

Each model in the VERTEC line is intended to support the type of rugged use encountered when transported from venue to venue. Care has been given to system design ergonomics, making VERTEC arrays among the simplest and fastest to setup and takedown.

All enclosures feature JBL Professional's rugged DuraFlex™ exterior finish. Each system features loudspeaker components with weather-resistant cone treatment.

S.A.F.E.™ SUSPENSION HARDWARE

All models in the VERTEC line are fitted with integral end-mounted suspension frames. These load-rated, heat-treated, premium-grade tubular frames couple together using quick-release pins and hinge bars to create arrays that are rigid for maximum strength, yet flexible in design and application.

ARRAY FRAME OPTIONS

The VERTEC suspension system includes several frame options for suspending arrays. "AF" (Array Frames) and "SF" (Short Frames) are available for use with sub compact, compact, midsize and fullsize elements. The Short Frames can also be used as an 'anchor' at the bottom of large arrays, providing a separate rear pickup point to tilt the array. These frames are also suitable for ground-stacking up to 6 enclosures (AF models) or 4 enclosures (SF models).

LINE ARRAY CALCULATOR

This predictive software provides a wealth of technical information about VERTEC line array system performance expectations for various audience configurations.

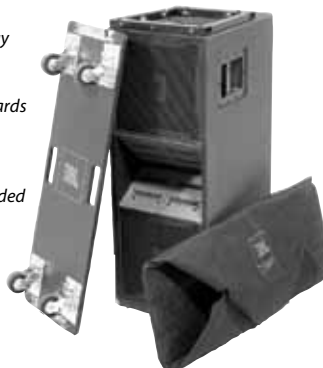
VT4889/VT4889-1

Fullsize, lightweight enclosure housing two 15" woofers, four 8" midrange transducers, and three high frequency compression drivers. These advanced components provide the highest power-to-weight ratio of any speaker in the fullsize line array class. VT4889-1 is a PlyMax® enclosure; VT4889 features an advanced composite shell.

VT4888

Midsize, lightweight line array element housing two 12" woofers, four 5½" midrange transducers, and two high frequency compression drivers. Designed for use in stand-alone arrays or in combination with other VERTEC system products.

VERTEC line array elements are available with dolly wheel-boards that double as a protective front plate, and reinforced, padded cover bags for maximum protection during handling and transport.



VT4887A

Compact, lightweight line array element housing two 8" woofers, four 4" midrange transducers, and two high frequency compression drivers. Offering the best low frequency extension and output in its class, it can be used in stand-alone arrays or in combination with other VERTEC system products.

VT4886

Subcompact Passive Three-Way Line Array Element fitted with two 6.5" woofers, four 2.5" midrange transducers, and two high frequency drivers with a highly refined internal passive network. Designed for stand-alone use or in multi-box arrays, and ideal for use in combination with the VT4883 Subcompact subwoofer.

VT4880/VT4880A

Fullsize, lightweight, centrally-vented arrayable subwoofers housing two 18" woofers. These advanced components, each fitted with dual voice coils, provide high output capabilities and are fully compatible with VT4889/VT4889-1 fullrange systems.

VT4882

Midsize, lightweight, centrally vented subwoofer enclosure housing two long-excursion 15" woofers. These advanced components, each with dual voice coils, provide high output capabilities and best-in-class power-to-weight ratio.

VT4881A

Compact, lightweight, vented subwoofer enclosure housing a dual voice coil 18" woofer. This advanced component has a compliance capable of nearly 3" (76 mm) peak-to-peak cone excursion, providing unparalleled low frequency extension and output

VT4883

Subcompact Dual 12" Cardioid-Arrayable Subwoofer is a companion low frequency extension for the VT4886 subcompact 3-way enclosure. Fitted with a pair of long-excursion 12" woofers to deliver high quality sound reinforcement of sub-low frequencies for a variety of applications where small enclosure size is key.

VERTEC®

Flexible Line Array Solutions

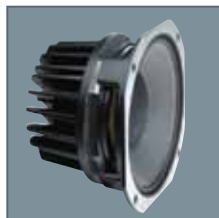
VERTEC® SYSTEM FEATURES



PRECISION WAVEGUIDES

RBI™: RADIATION
BOUNDARY INTEGRATORINPUT PANEL WITH
PARALLEL CONNECTORS

VT4889 SYSTEM COMPONENTS

2255H 15" DIFFERENTIAL
DRIVE® LOUDSPEAKER2250H 8"
MIDRANGE CONE
TRANSDUCER2435H
HIGH PERFORMANCE
COMPRESSION DRIVER

FULLSIZE



MIDSIZE



COMPACT



SUBCOMPACT

full range

SYSTEM TYPE	Fullsize Three-way Line Array Element
FREQUENCY RESPONSE	45 Hz - 16 kHz (± 3 dB)
COVERAGE (H) -6 dB	90° nominal (250 Hz - 16 kHz)
SENSITIVITY: 1 W, 1 m	LF: 99 dB, MF: 102 dB, HF: 116 dB
NOMINAL IMPEDANCE	LF: 2 x 8 ohms, MF: 8 ohms, HF: 16 ohms
INPUT POWER RATING ¹ : LF MF/HF	2 x 1000 W 1400 W MF/ 225 W HF
TRANSDUCERS	LF: 2 x 2255H (15 in) MF: 4 x 2250H (8 in) HF: 3 x 2435H
ENCLOSURE	Wedge Frustrum PlyMax® [VT4889-1]
FINISH	DuraFlex™
INPUT CONNECTORS	NL8, 2 each
DIMENSIONS (H x W x D)	489 x 1213 x 546 mm 19.25 x 47.75 x 21 in
NET WEIGHT (each)	72.6 kg (160 lb) [VT4889] 78.9 kg (174 lb) [VT4889-1]



SYSTEM TYPE	Midsize Three-way Line Array Element
FREQUENCY RESPONSE	60 Hz - 16 kHz (± 3 dB)
COVERAGE (H) -6 dB	90° nominal (250 Hz - 16 kHz)
SENSITIVITY: 1 W, 1 m	LF: 98 dB, MF: 102 dB, HF: 114 dB
NOMINAL IMPEDANCE	LF: 2 x 8 ohms, MF: 8 ohms, HF: 16 ohms
INPUT POWER RATING ¹ : LF MF/HF	2000 W 600 W MF/ 150 W HF
TRANSDUCERS	LF: 2 x 2262H (12 in) MF: 4 x 2106H (5 1/2 in) HF: 2 x 2431H
ENCLOSURE	Wedge Frustrum, PlyMax
FINISH	DuraFlex
INPUT CONNECTORS	NL8, 2 each
DIMENSIONS (H x W x D)	355 x 991 x 508 mm 14 x 39 x 20 in
NET WEIGHT (each)	51.3 kg (113 lb)

SYSTEM TYPE	Compact Bi-amped Line Array Element
FREQUENCY RESPONSE	67 Hz - 20 kHz (± 3 dB)
COVERAGE (H) -6 dB	100° nominal (500 Hz - 16 kHz)
SENSITIVITY: 1 W, 1 m	LF: 97 dB, MF/HF: 103 dB
NOMINAL IMPEDANCE	LF: 8 ohms, MF/HF: 8 ohms
INPUT POWER RATING ¹ : LF MF/HF	1000 W 225 W (MF/HF)
TRANSDUCERS	LF: 2 x 2168J-1 (8 in) MF: 4 x 2104H (4 in) HF: 2 x 2408H
ENCLOSURE	Wedge Frustrum, PlyMax
FINISH	DuraFlex
INPUT CONNECTORS	NL8 and NL-4, 2 each
DIMENSIONS (H x W x D)	281 x 787 x 415 mm 11 x 31 x 16.3 in
NET WEIGHT (each)	30.4 kg (67 lb)



SYSTEM TYPE	Subcompact Passive 3-Way Line Array Element
FREQUENCY RESPONSE	75 Hz - 18 kHz
COVERAGE (H) -6 dB	110° nominal (250 Hz - 16 kHz)
SENSITIVITY: 1 W, 1 m	102 dB
NOMINAL IMPEDANCE	12 ohms
INPUT POWER RATING ¹ : LF MF/HF	700 W
TRANSDUCERS	LF: 2 x 2166H Dual Coil (6.5" in) MF: 4 x 2103G (2.5 in) HF: 2 x 2414H
ENCLOSURE	Wedge Frustrum, PlyMax
FINISH	DuraFlex
INPUT CONNECTORS	NL8 and NL-4, 2 each
DIMENSIONS (H x W x D)	197 x 577 x 260 mm 7.75 x 22.7 x 10.25 in
NET WEIGHT (each)	15.9 kg (35 lb)



¹ AES 2 hour Standard, free air. AES 2 hour rating plus long term 100 hour rating specified for cone transducers.

subwoofers

SYSTEM TYPE	Fullsize Dual 18" Subwoofer
FREQUENCY RESPONSE	28 Hz - 75 Hz (± 3 dB)
SENSITIVITY: 1 W, 1 m	98 dB (2.83v/1m)
NOMINAL IMPEDANCE	2 x 8 ohms
INPUT POWER RATING ¹ : LF	2000 W
TRANSDUCERS	2 x 2258H Dual-Coil (18 in)
ENCLOSURE	Wedge Frustrum
FINISH	DuraFlex
INPUT CONNECTORS	NL4, 2 each
DIMENSIONS (H x W x D)	493 x 1229 x 860 mm 19.42 x 48.38 x 33.85 in
NET WEIGHT (each)	68.5 kg (151 lb)

SYSTEM TYPE	Fullsize Dual 18" Ultra Long Excursion Subwoofer
FREQUENCY RESPONSE	29 Hz - 120 Hz (± 3 dB)
SENSITIVITY: 1 W, 1 m	95 dB (2.83v/1m)
NOMINAL IMPEDANCE	2 x 8 ohms
INPUT POWER RATING ¹ : LF	4000 W
TRANSDUCERS	2 x 2269H Dual-Coil (18 in)
ENCLOSURE	Wedge Frustrum
FINISH	DuraFlex
INPUT CONNECTORS	NL8 and NL4, 2 each
DIMENSIONS (H x W x D)	493 x 1229 x 860 mm 19.42 x 48.38 x 33.85 in
NET WEIGHT (each)	83.9 kg (185 lb)

SYSTEM TYPE	Midsize Dual 15" Subwoofer
FREQUENCY RESPONSE	32 Hz - 110 Hz (± 3 dB)
SENSITIVITY: 1 W, 1 m	95 dB (35 Hz - 120 Hz)
NOMINAL IMPEDANCE	8 ohms
INPUT POWER RATING ¹ : LF	2000 W
TRANSDUCERS	2 x 2266H Dual-Coil (15 in)
ENCLOSURE	Wedge Frustrum
FINISH	DuraFlex
INPUT CONNECTORS	NL8 and NL4, 2 each
DIMENSIONS (H x W x D)	457 x 1013 x 858 mm 18 x 39.9 x 33.8 in
NET WEIGHT (each)	53.5 kg (118 lb)

SYSTEM TYPE	Compact 18" Subwoofer
FREQUENCY RESPONSE	34 Hz - 125 Hz (± 3 dB)
SENSITIVITY: 1 W, 1 m	91 dB (2.83v/1m)
NOMINAL IMPEDANCE	8 ohms (Each coil independently wired)
INPUT POWER RATING ¹ : LF	2000 W
TRANSDUCERS	1 x 2269H Dual-Coil (18 in)
ENCLOSURE	Rectangular, PlyMax
FINISH	DuraFlex
INPUT CONNECTORS	NL8 and NL4, 2 each
DIMENSIONS (H x W x D)	569 x 787 x 654 mm 22.4 x 31 x 25.8 in
NET WEIGHT (each)	50.4 kg (111 lb)

SYSTEM TYPE	Subcompact Dual 12" Cardioid-Arrayable Subwoofer
FREQUENCY RESPONSE	40 Hz - 600 Hz (± 3 dB)
SENSITIVITY: 1 W, 1 m	95 dB
NOMINAL IMPEDANCE	2 x 8 ohms or 4 ohms (user-selectable)
INPUT POWER RATING ¹ : LF	1600 W
TRANSDUCERS	2 x 2263H-1 Dual-Coil (12 in)
ENCLOSURE	Rectangular, PlyMax
FINISH	DuraFlex
INPUT CONNECTORS	NL8 and NL4, 2 each
DIMENSIONS (H x W x D)	397 x 577 x 641 mm 15.62 x 22.72 x 25.24 in
NET WEIGHT (each)	30.8 kg (68 lb)

key features

- INDUSTRY'S SMALLEST, LIGHTEST, MOST POWERFUL HIGH FREQUENCY COMPRESSION DRIVERS

- ADVANCED TECHNOLOGY COMPONENTS
- PRECISION WAVEGUIDES COUPLE TO CREATE HF VERTICAL SLOT APERTURE
- RADIATION BOUNDARY INTEGRATOR (RBI™) TECHNOLOGY INTEGRATES OUTPUT OF INDIVIDUAL BANDPASS ELEMENTS

- EXCEPTIONALLY RIGID, LIGHTWEIGHT ENCLOSURE CONSTRUCTION
- RUGGED DURAFLEX™ EXTERIOR FINISH AND WEATHERIZED COMPONENTS
- INTEGRATED S.A.F.E.™ SUSPENSION SYSTEM

Separately-ordered accessories for:

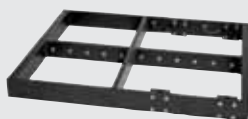
VT4889-1, VT4880, VT4880A, VT4888, VT4882, VT4887A and VT4881A

ACCESSORY KITS

- VT4889-1-ACC** Dolly/wheelboard and padded protective cover for one VT4889-1.
- VT4880-ACC** Dolly/wheelboard, padded protective cover and suspension hinge bars for one VT4880.
- VT4880A-ACC** Dolly/wheelboard and padded protective cover for one VT4880A.
- VT4888-ACC** Dolly/wheelboard and padded protective cover for one VT4888.
- VT4882-ACC** Dolly/wheelboard and padded protective cover for one VT4882.
- VT4887-ACC** Dolly/wheelboard and padded protective cover for one VT4887A.
- VT4881-ACC** Dolly/wheelboard and padded protective cover for one VT4881A.

SUSPENSION ACCESSORIES

- VT4889-AF** Array Frame for suspending or ground stacking VT4889, VT4889-1 and/or VT4880, VT4880A enclosures.
- VT4889-SF** Short Frame for suspending or ground stacking VT4889, VT4889-1 and/or VT4880, VT4880A enclosures; can also be used on the bottom of arrays for rear pullback suspension.
- VT4888-AF** Array Frame for suspending or ground stacking VT4888 or VT4882 enclosures.
- VT4888-SF** Short Frame for suspending or ground stacking VT4888 or VT4882 enclosures; can also be used on the bottom of arrays for rear pullback suspension.
- VT4887-AF** Array Frame for suspending or ground stacking VT4887A or VT4881A enclosures.
- VT4887-SF** Short Frame for suspending or ground stacking VT4887A or VT4881A enclosures; can also be used on the bottom of arrays for rear pullback suspension.
- VT4800-CA** Compact Adaptor, use to suspend VT4887 or VT4887A from VT4888 or VT4882.
- VT4800-DA** Downfill Adaptor, use to suspend up to 4 VT4887As or VT4887 enclosures from VT4889, VT4889-1, VT4880 or VT4880A enclosures.
- VT4800-UA** Universal Adaptor Frame, use to suspend midsize or compact models from VT4889, VT4889-1, VT4880 or VT4880A enclosures.



VT4889-AF (Array Frame)



VT4889-SF (Short Frame)



VT4888
Midsize Line Array System

VT4882
Midsize Arrayable Subwoofers



VT4881A
Compact Arrayable Subwoofers

VT4887A
Compact Line Array System



Subcompact System: VT4883 Cardioid-Arrayable Subwoofers With VT4886 Passive Three-Way Line Array Elements

REPLACEMENT ACCESSORIES

(These ship with VT4889 and are available as replacement items)

- VT4889-DOLLY** Dolly/wheelboard, 11.4 kg, 25 lb
- VT4889-COVER** Padded, protective cover. Ballistic nylon and aluminum-reinforced 3.5 kg, 8 lb
- VT4889-RIG** Set of (4) hinge bars, includes (2) long/rear and (2) short/front 4.2 kg, 9.3 lb

Accessories available for the VT4886 and VT4883

- VT4886-AF** Array frame for suspension or ground stacking of VT4883, VT4886, or mixed VT4883/VT4886 arrays.
- VT4886-SF** Short Array frame for suspension of smaller VT4886 arrays. Can also be used at the bottom of arrays for rear pull-back suspension.
- VT4886-DF88** Downfill Adapter for suspending VT4886 under VT4888 or VT4882.
- VT4886-DF89** Downfill Adapter for suspending VT4886 under VT4889 or VT4880, VT4880A.
- VT4886-UB** Universal Bracket with extension arms for pole mounting, stacking, underbalcony suspension or wall mounting of 3x, 4x, 4x or 3x VT4886 enclosures, respectively.
- VT4886-UB1** Basic Universal Bracket for pole mounting, stacking, underbalcony suspension or wall mounting of 2x, 4x, 4x or 3x VT4886 enclosures, respectively.
- VT4886-HB** Horizontal bracket for arraying VT4886 enclosures as a constant curvature horizontal line array.
- SS5-BK** Adjustable extension rod with M20 thread for attachment to VT4883 subwoofer. Secure, hand crank height adjustment. Vibration isolation adapter for attachment to optional VT4886-UB or -UB1 accessories.

VERTEC® DP Series

Powered Line Array Systems



DP
DRIVEPACK™

The JBL VERTEC DP Series couples industry-leading loudspeaker technology to the innovative JBL DrivePack® technology platform delivering superb audio quality and robust power, perfectly matched to the enclosures, with comprehensive internal digital signal processing. Based on JBL's industry-leading VERTEC line array elements, these systems are lightweight, powerful, and cost-effective.

Designed in cooperation with development partners Crown, dbx and BSS, JBL DrivePack models are designed to exceed all expectations for loudspeaker performance, power handling and audio system control.

VT4889ADP-DA

Fullsize, powered enclosure housing two 15" woofers, four 8" midrange transducers, and three high frequency compression drivers that combine to provide a high power-to-weight ratio. Equipped with a JBL DrivePack DP3 fully integrated power and DSP electronics package featuring BSS OmniDrive HD™ signal processing.

The VT4889ADP-DA is designed to deliver high-quality reinforcement of music and speech in large-scale, maximum-performance applications including concert audio, corporate A/V and theatrical presentations for both portable users and performance venue installations.

VT4888DP-DA

Midsize, powered enclosure housing two 12" woofers, four 5.5" midrange transducers and two high frequency compression drivers. Equipped with a JBL DrivePack DP3 fully integrated power and DSP electronics package featuring BSS OmniDrive HD™ signal processing.

The VT4888DP-DA is designed to deliver high-quality reinforcement of music and speech in a variety of general-purpose applications including concert audio and corporate A/V presentations for both portable users and fixed venue installations.

VT4887ADP-DA

Compact, powered enclosure housing two 8" woofers, four 4" midrange transducers and two high frequency compression drivers. Equipped with a JBL DrivePack DP2 fully integrated power and DSP electronics package featuring BSS OmniDrive HD™ signal processing.

The VT4887ADP-DA is designed to deliver high-quality reinforcement of music and speech in a variety of applications where smaller-sized arrays are appropriate, including concert audio, corporate A/V and theatrical presentations for both portable users and performance installations.

VT4880ADP-DA

Fullsize, powered sub-woofer housing two 2269G Ultra-Long Excursion 18" woofers and a JBL DrivePack DP-3 fully integrated power and DSP electronics package featuring BSS OmniDrive HD™ signal processing.

The VT4880ADP-DA is designed to deliver high quality reinforcement of VLF (Very Low Frequency) musical information for a broad range of applications. Ideal companion to VT4889ADP-DA fullsize powered three-way systems.

VT4882DP-DA

Midsize, powered sub-woofer housing two long excursion 15" woofers and a JBL DrivePack DP3 fully integrated power and DSP electronics package featuring BSS OmniDrive HD™ signal processing.

The VT4882DP-DA is designed to deliver high quality sound reinforcement of sub-low frequencies for concert audio and multi-media presentations of all types. The VT4882DP-DA is an ideal companion to VT4888 or VT4888DP-DA midsize full-range systems.

VT4881ADP-DA

Compact, powered sub-woofer housing one Ultra-Long Excursion 18" woofer and a JBL DrivePack DP1 fully integrated power and DSP electronics package featuring BSS OmniDrive HD™ signal processing.

The VT4881ADP-DA is designed to deliver high quality sound reinforcement of VLF musical information for a variety of applications including concert audio, corporate A/V and theatrical presentations of all types. Suitable for both portable users and fixed venue installations. Ideal companion to VT4887ADP-DA or VT4887A compact three-way systems.

key features

- INTEGRATED DIGITAL SIGNAL PROCESSING
- JBL DRIVEPACK® ELECTRONICS PACKAGE
- AUTOMATIC SELECTION OF 50 OR 60 Hz WORLDWIDE AC LINE VOLTAGES
- STANDARD NETWORK INPUT MODULES



Standard DPDA Input Module
(AES digital audio, BSS Audio OmniDrive HD processing, EtherCon connectors)



DPIP Optional Non-Networked Input Module
(analog audio only)



Software Device Panel Available in Harman Pro's HiQnet™ System Architect Software

INPUT MODULE & CONNECTIVITY

JBL DrivePacks are equipped with a modular input bay. The standard HiQnet-compatible DPDA input module offers ethernet connectivity for remote control and monitoring. The DPDA module also provides AES digital audio inputs with analog backup, BSS Audio OmniDrive HD™ signal processing with LevelMax™ multi-stage limiting, high-performance FIR/IIR filters, array/box I.D. mechanism and robust EtherCon® connectors optimized for tour/rental applications.

The optional, non-networked lower-cost DPIP input module from dbx features analog audio inputs. Like the DPDA module, it includes sophisticated DSP technology incorporating digital equalization, time alignment, frequency-dividing networks, classic dbx limiting functionality, and dbx Type IV® analog-to-digital converters. Two operating modes can be selected via rear panel switch (fullrange or subwoofer filter enable).

full-range

VT4889ADP-DA

SYSTEM TYPE

Powered Fullsize 3-way Line Array, Integrated Audio System

FREQUENCY RESPONSE

45 Hz – 16 kHz (± 3 dB)

HORIZONTAL COVERAGE (-6 dB)

90° nominal (250 Hz - 16 kHz)

MAXIMUM PEAK OUTPUT

143 dB, 1m

NOMINAL IMPEDANCE: LF

LF: 4 ohms

MF

MF: 8 ohms

HF

HF: 16 ohms (wired in series)

DRIVEPACK POWER RATING

6000W Peak, 3000W Continuous

TRANSDUCERS: LF

2 x 2265H (15 in) (Dual-Coil)

MF

4 x 2169H (8 in)

HF

3 x 2435H (3" exit compression driver)

ENCLOSURE

Wedge Frustrum

FINISH

DuraFlex™

INPUT CONNECTORS

Female XLR/Male XLR, EtherCon

DIMENSIONS

1215 x 494 x 692 mm

(H x W x D)

47.8 x 19.4 x 27.2 in

NET WEIGHT (each)

93.1 kg (205 lb)

VT4888DP-DA

Powered Midsize 3-way Line Array, Integrated Audio System

60 Hz - 16 kHz (± 3 dB)

90° nominal (250 Hz - 16 kHz)

139 dB, 1m

LF: 4 ohms

MF: 8 ohms

HF: 16 ohms

6000W Peak, 3000W Continuous

2 x 2262H (12 in) (Dual-Coil)

4 x 2106H (5 1/2 in)

2 x 2431H (1.5" exit compression driver)

Wedge Frustrum

DuraFlex™

Female XLR/Male XLR, EtherCon

355 x 1013 x 678 mm

14 x 39.9 x 26.7 in

67.2 kg (148 lb)

VT4887ADP-DA

Powered Compact 3-way Line Array, Integrated Audio System

67 Hz - 20 kHz (± 3 dB)

100° nominal (250 Hz - 16 kHz)

136 dB, 1m

LF: 4 ohms

MF, HF: 8 ohms

2200W Peak 1100W Continuous

2 x 2168H-1 (8 in) (Dual-Coil)

4 x 2104H (4 in)

2 x 2408H (1" exit compression driver)

Wedge Frustrum

DuraFlex

Female XLR/Male XLR, EtherCon

279 x 787 x 563 mm

11 x 31 x 22.1 in

39.7 kg (87.5 lb)

accessories

Separately-ordered accessories for:
VT4889ADP-DA, VT4888DP-DA,
VT4887ADP-DA

VT4889ADP-ACC Dolly/wheelboard and padded protective cover for one VT4889ADP-DA

VT4888DP-ACC Dolly/wheelboard and padded protective cover for one VT4888DP-DA

VT4887ADP-ACC Dolly/wheelboard and padded protective cover for one VT4887ADP-DA

Separately-ordered accessories for:
VT4880ADP-DA, VT4882DP-DA,
VT4881ADP-DA

VT4880ADP-ACC Dolly/wheelboard and padded protective cover for one VT4880ADP-DA

VT4882DP-ACC Dolly/wheelboard and padded protective cover for one VT4882DP-DA

VT4881ADP-ACC Dolly/wheelboard and padded protective cover for one VT4881ADP-DA

subwoofers

VT4880ADP-DA

SYSTEM TYPE

Powered Fullsize 2-15" Subwoofer, Integrated Audio System

FREQUENCY RESPONSE

29 Hz – 120 Hz (± 3 dB)

MAXIMUM PEAK OUTPUT

143 dB SPL, 1m

NOMINAL IMPEDANCE

LF: 4 ohms (Each transducer)

DRIVEPACK POWER RATING

6900 W Peak, 3500 W Continuous

TRANSDUCERS

2 x 2269G (18 in) (Dual-Coil)

ENCLOSURE

Wedge Frustrum

FINISH

DuraFlex

INPUT CONNECTORS

Female XLR/Male XLR, EtherCon

DIMENSIONS

1229 x 493 x 1011 mm

(H x W x D)

48.4 x 19.4 x 39.8 in

NET WEIGHT (each)

99.4 kg (219 lb)

VT4882DP-DA

Powered Midsize 2-15" Subwoofer, Integrated Audio System

32 Hz - 110 Hz (± 3 dB)

133 dB SPL, 1m

LF: 8 ohms (Each transducer)

3400W Peak, 1700W Continuous

2 x 2266H (15 in) (Dual-Coil)

Wedge Frustrum

DuraFlex

Female XLR/Male XLR, EtherCon

457 x 1013 x 1011 mm

18 x 39.9 x 39.8 in

69.9 kg (154 lb)

VT4881ADP-DA

Powered Compact 1-18" Subwoofer, Integrated Audio System

34 Hz - 125 Hz (± 3 dB)

131 dB SPL, 1m

VLF: 4 ohms

3600W Peak, 1800W Continuous

1 x 2269G (18 in) (Dual-Coil)

Rectangular Enclosure

DuraFlex

Female XLR/Male XLR, EtherCon

569 x 787 x 800 mm

22.4 x 31 x 31.5 in

62.2 kg (137 lb)

Installation Products

Attractions	Education	Performance Theaters
A/V Systems	Fitness and Recreation	Professional Offices
Casinos	Government Facilities	Restaurants
Clubs	Health Facilities	Retail
Concert Venues	Hotels	Sporting Facilities
Convention Facilities	Houses of Worship	Sports Bars
Corporate	Museums	Theme Parks
	Music Cafes	Transit Centers



Experience Music Center, Seattle, WA



New Meadowlands Stadium
East Rutherford, NJ



Harrahs, Chicago, IL



Oriental Art Center, Shanghai, China



Overture Center for the Arts, Madison, Wisconsin



HSBC Arena, Buffalo, New York



2nd Baptist Church, Houston, Texas

No matter where you go in this world, you'll find JBL Installed Sound Speaker Systems at many of the most notable venues.

With that kind of global perspective, JBL has come to respect the one indisputable truth of business: every customer is unique. A speaker system that is perfectly right for one job might be perfectly wrong for another. That's why JBL Installed Sound products offer a range of options without equal. From the extraordinary value of the Control Contractor Series to the ultimate precision of the JBL Precision Directivity Series, there's a JBL Installed Sound product with a solid business solution based on equally solid business savvy.

For more than 60 years, JBL has been the professional speaker of choice wherever sound matters. We'd like to believe it should be your choice, too.

VP Series

Self-Powered Integrated Audio Systems



Venue Performance Series—a family of self-powered loudspeaker systems consisting of ten models, suitable for portable or fixed installation sound reinforcement applications where high-output, low-distortion, and the highest quality sound are required.

JBL DrivePack®



A key feature of the VP Series are the highly adaptable JBL DrivePack amplifier and signal processing modules. The two channel DP-2 module provides 1100 watts of total continuous power to each fullsize, full-range system while the DP-1 sub-woofer module provides 1800 watts continuous power to the loudspeaker.

The JBL DP-1 and DP-2 DrivePacks operate on auto-selecting line voltages at 50 or 60 Hz for worldwide operation. The compact three channel DPC-2 module used on the smaller VP Series models uses two of the three amplifier channels to enable JBL's Dual Bridge Technology™ (DBT) allowing the most efficient power transfer to the JBL Differential Drive® woofers. DP-1 and DP-2 DrivePack models incorporate Crown's BCA™ (Balanced Current Amplification) Class-I circuitry with temperature-compensated modulation and state of the art feedback circuitry. An extraordinarily efficient passive cooling system eliminates expensive and noisy fans, effecting heat dissipation for optimal cooling.



INPUT MODULES & CONNECTIVITY

JBL DrivePacks DP-1 and DP-2 are equipped with a modular input bay. Standard DPIP input modules from dbx feature analog audio inputs and sophisticated DSP technology incorporating digital pre-equalization filters, frequency-dividing networks, and limiter circuitry from one of the industry's most trusted names in signal processing. Classic dbx Limiting functionality, dbx Type IV® analog-to-digital converters, and full bandpass and crossover configurations are all packed into the standard input module on every JBL DrivePack unit. With JBL DrivePack, dbx's heritage of unrivaled system/loudspeaker control continues.

The optional DPDA input module allows most JBL VP Series systems to link seamlessly into Harman Professional's HiQnet system. The modular input design allows for future developments in audio distribution and networking topologies.



DPDA Input Module – HiQnet™ Network Compatible with AES Digital Audio and BSS OMNIDRIVE™ HD Signal Processing

DPDA Input Module

The DPDA Input Module can be used as a retrofit sub-assembly with any JBL DrivePack®-equipped loudspeaker system utilizing the DP-1, DP-2, or DP-3 amplifier modules. Upgrading to the DPDA module provides powered loudspeaker system users with AES/EBU digital audio capabilities, the sonic benefits of advanced signal processing features, and a variety of input and connectivity options.

The onboard 100 Mb Ethernet networking switch with daisy-chain capability allows for Remote Control and Monitoring via HiQnet System Architect™ software. Additionally, a rotary mechanical encoder switch provides easy array identification and box positioning, up to 99 different speaker positions and up to 99 different speaker arrays or locations.

Twenty type-selectable input filters (10 System and 10 Guest filters) are available for system equalization along with user-adjustable input delay of up to 2 seconds and many more user features.

FEATURE LOADED

The VP Series also includes:

- JBL Differential Drive cone transducers
- JBL 2452H-SL 1.5" exit, 4" diaphragm compression driver
- Newly-created stylized, ergonomically designed powder-coated steel handle
- Multiple attachment points for ultimate rigging flexibility with overhead suspension

key features

VP Series

- NEW 2452H-SL 4" DAMPED DIAPHRAGM HIGH-FREQUENCY COMPRESSION DRIVER
- JBL DRIVEPACK® TECHNOLOGY, CO-ENGINEERED WITH CROWN
- COMPREHENSIVE ON-BOARD DSP
- HIQNET™ SYSTEM ARCHITECT™ COMPATIBILITY
- OPTIONAL DPDA INPUT MODULE FOR AES/EBU DIGITAL AUDIO INPUT CONNECTIVITY
- DIFFERENTIAL DRIVE® LOW-FREQUENCY DRIVERS
- INTEGRATED RIGGING HARDWARE
- ERGONOMICALLY DESIGNED HANDLES

VP7210/95DP

The **VP7210/95DP** is a 10" two-way system with the 2452H-SL compression driver. This model features a 90°x 50° rotatable horn. The system is driven by an 875W continuous power three channel DPC-2 JBL DrivePack®.

VP7212MDP

The **VP7212MDP** is a dedicated 12" two-way floor monitor and features 2452H-SL 4" voice coil compression driver. The VP7212MDP is equipped with the JBL DrivePack model DPC-2 with 875W continuous power available.

VP7212/95DPC

The **VP7212/95DPC** is a 12" two-way compact system with a 2452H-SL compression driver. This model features a 90°x 50° PT waveguide. The system is equipped with the JBL DrivePack model DPC-2 with 875W of continuous power.

VP7215/95DPC

The **VP7215/95DPC** is a 15" two-way compact system with a 2452H-SL compression driver. This model features a 90°x 50° PT waveguide. The system is equipped with the JBL DrivePack model DPC-2 with 875W of continuous power.

VP7212/64DP (60° x 40°)

VP7212/95DP (90° x 50°)

The **VP7212/64DP** and **VP7212/95DP** are two-way speaker systems housing one 12" Differential Drive low frequency transducer and the new 2452H-SL compression driver. The VP7212 is available with either a 60° x 40° or 90° x 50° JBL Progressive Transition™ Waveguide.

VP7215/64DP (60° x 40°)

VP7215/95DP (90° x 50°)

The **VP7215/64DP** and **VP7215/95DP** are two-way speaker systems housing one 15" Differential Drive low frequency transducer and the new 2452H-SL compression driver. The VP7215 is available with either a 60° x 40° or 90° x 50° JBL Progressive Transition™ Waveguide.

VP7315/64DP

The **VP7315/64DP** is a three-way system housing one 15" Differential Drive low frequency transducer, the CMCD-82H 8" midrange transducer and the new 2452H-SL compression driver mounted on a JBL PT-K64-MHF Progressive Transition Waveguide.

VPSB7118DP

The **VPSB7118DP** subwoofer system features one 18" Differential Drive low frequency transducer. This model includes an integrated pole mount, and is sized to readily combine into arrays of various configurations using other models in the line.

specifications

	VP7210/95DP	VP7212MDP	VP7212/95DPC	VP7215/95DPC
SYSTEM TYPE	Self-Powered Two-way Speaker System	Self-Powered Two-way Speaker System	Self-Powered Two-way Speaker System	Self-Powered Two-way Speaker System
FREQUENCY RESPONSE	80 Hz - 20 kHz (±3 dB)	80 Hz - 18 kHz (±3 dB)	65 Hz - 18 kHz (±3 dB)	60 Hz - 18 kHz (±3 dB)
NOMINAL COVERAGE	90° x 50°	50° x 90°	90° x 50°	90° x 50°
DRIVEPACK POWER RATINGS	1750W Peak (875W Cont)	1750W Peak (875W Cont)	1750W Peak (875W Cont)	1750W Peak (875W Cont)
TRANSDUCERS: LF	10 in Differential Drive	12 in Differential Drive	12 in Differential Drive	15" Differential Drive
HF (MF)	2452H-SL 1.5" exit compression driver	2452H-SL 1.5" exit compression driver	2452H-SL 1.5" exit compression driver	2452H-SL 1.5" exit compression driver
HF (MF) HORN	JBL Progressive Transition™ Waveguide	JBL Progressive Transition™ Waveguide	JBL Progressive Transition™ Waveguide	JBL Progressive Transition™ Waveguide
FINISH	Black Duraflex™	Black Duraflex™	Black Duraflex™	Black Duraflex™
GRILLE	14-gauge perforated steel	14-gauge perforated steel	14-gauge perforated steel	14-gauge perforated steel
INPUT CONNECTOR	M/FM XLR	M/FM XLR	M/FM XLR	M/FM XLR
DIMENSIONS (H x W x D)	521 x 293 x 303 mm	346 x 565 x 413 mm	533 x 358 x 334 mm	613 x 434 x 359 mm
	20.5 x 11.5 x 11.9 in	13.6 x 22.3 x 16.2 in	21.0 x 14.1 x 13.1 in	24.1 x 17.1 x 14.1 in
NET WEIGHT (each)	18.4 kg (40.5 lb)	20.7 kg (45.5 lb)	21.3 kg (47 lbs)	24.7 kg (55 lbs)

	VP7212/64DP & VP7212/95DP	VP7215/64DP & VP7215/95DP	VP7315/64DP	VPSB7118DP
SYSTEM TYPE	Self-Powered Two-way Speaker System	Self-Powered Two-way Speaker System	Self-Powered Three-way Speaker System	Self-Powered Sub-woofer System
FREQUENCY RESPONSE	60 Hz - 18 kHz (±3 dB)	45 Hz - 18 kHz (±3 dB)	45 Hz - 18 kHz (±3 dB)	35 Hz - 125 Hz (±3 dB)
NOMINAL COVERAGE	VP7212/64: 60 x 40 VP7212/95: 90 x 50	VP7215/64: 60 x 40 VP7215/95: 90 x 50	VP7315/64: 60 x 40	
DRIVEPACK POWER RATINGS	2200W Peak (1100W Cont)	2200W Peak (1100W Cont)	2200W Peak (1100W Cont)	3600W Peak (1800W Cont)
TRANSDUCERS: LF	12 in Differential Drive	15 in Differential Drive	15 in Differential Drive	18 in Differential Drive
HF (MF)	2452H-SL 1.5" exit compression driver	2452H-SL 1.5" exit compression driver	2452H-SL 1.5" exit compression driver CMCD-82H (8" Midrange) JBL PT-K64-MHF Progressive Transition™ Waveguide	
HF (MF) HORN	JBL Progressive Transition™ Waveguide	JBL Progressive Transition™ Waveguide	JBL Progressive Transition™ Waveguide	
FINISH	Black Duraflex™	Black Duraflex™	Black Duraflex™	Black Duraflex™
GRILLE	14-gauge perforated steel	14-gauge perforated steel	14-gauge perforated steel	14-gauge perforated steel
INPUT CONNECTOR	Female XLR/Male XLR	Female XLR/Male XLR	Female XLR/Male XLR	Female XLR/Male XLR
INPUT CONNECTOR OPTION	DPCN (CobraNet compliant) 2 x RJ45 connectors + M/FM XLR	DPCN (CobraNet compliant) 2 x RJ45 connectors + M/FM XLR	DPCN (CobraNet compliant) 2 x RJ45 connectors + M/FM XLR	DPCN (CobraNet compliant) 2 x RJ45 connectors + M/FM XLR
DIMENSIONS (H x W x D)	701.8 x 383.8 x 523.5 mm	765.3 x 447.6 x 523.5 mm	914.4 x 528.3 x 624.8 mm	414.4 x 701.8 x 812.8 mm
	27.63 x 15.11 x 20.61 in	30.13 x 17.62 x 20.61 in	36 x 20.8 x 24.6 in	20.25 x 27.63 x 32 in
NET WEIGHT (each)	35.4 kg (78 lb)	38.6 kg (85 lb)	44 kg (97 lb)	58.5 kg (129 lb)

Marquis Dance Club Series

MARQUIS
DANCE CLUB SERIES



As a club designer, your creativity, vision and passion are the heart of an electrifying experience, whether it's a world-class mega-club or an intimate lounge. Knowing this illuminated our vision in creating the new JBL Marquis Dance Club Series - specifically designed for the extreme requirements of large and mega-size clubs.

The Marquis Series comprises eight powerful multi-way systems and subwoofer models that combine JBL's extraordinary sound, proven reliability and state-of-the-art technology with striking architectural design and versatile configurability. From thumping mega dance floors to tranquil VIP lounges, from eclectic chill rooms to complex sound booths, the Marquis Series systematic loudspeaker designs are scalable to smaller venues, ultra lounges, and mega clubs alike. Regardless of the application, the Marquis Series is a multi faceted tool for you to achieve your vision.

Create the Ultimate Experience

The goal of every premier dance club designer is to create the ultimate space, outfitted with the best equipment, so gifted DJ's can express every creative impulse to drive an irresistible experience for everyone - on and off the dance floor. JBL knows what you need in order to accomplish this. JBL led the way in club loudspeaker design, helping to define club sound at the very beginning of the industry. During the disco boom of the 70's nearly all dance club systems utilized JBL loudspeaker components. The massive amount of engineering development since then, combined with JBL's driving passion and commitment to creating the best, highest performing sound systems in the dance world, make the Marquis Dance Series the premier sound system for the ultimate dance club experience.

Superb Architectural Design and Versatile Configurability

The Marquis Dance Series features stunning, high design that is fully complementary with premier club environments. Rugged as well as versatile, the Marquis Series is built to the highest professional standards to withstand continuous, demanding professional use. Whether you choose to deploy their stunning architectural features into your overall aesthetic, or configure them into the background, their technical performance is specifically designed for dance clubs to ensure your patrons will be immersed in the soul and depth of the music regardless of where they are in your club. Their wide array of configurability ensures compatibility with the specific design goals, power requirements and coverage needs of any environment you envision.

Stack Security and Precise Adjustment

Secure mounting in any floor configuration is assured by the JBL Marquis Dance Stacking Bracket kit (MDSB-1). Custom designed for the series, the brackets securely fasten multiple boxes to each other and mount into M10 rigging connections for further configurability.

The MDSB bracket adjusts the upper cabinet through 0, 5, 10, and 15 degrees of downward angle to accommodate precise adjustment of the coverage area.

Beautifully Durable

The ruggedized cabinet covering and architecturally designed grille pattern bring high-design to the overall look of the Marquis Series while providing superb protection for all components.

Marquis Dance Club Series

key features

➤ LEGENDARY JBL TECHNOLOGY

➤ OUTSTANDING PATTERN CONTROL

➤ VERSATILE CONFIGURATIONS

➤ SPECIFICALLY DESIGNED FOR PREMIER DANCE CLUBS

JBL Selenium Ultra High Frequency Bullet Drivers

Super high frequencies are handled by the MD1 Super Tweeter module, ensuring extremely high sensitivity and low distortion for transparent response, excellent coverage and long throw.

JBL Progressive Transition™ Waveguides

JBL's patented Progressive Transition™ Waveguides direct the sound of all the Marquis Series compression drivers to provide outstanding pattern control with smooth sound and extremely low distortion even at extraordinarily high dance club volume levels.

JBL Differential Drive® Technology

The entire complement of Marquis Series drivers employ JBL's patented Differential Drive technology which incorporates two voice coils and two magnetic gaps providing higher peak output with less power compression. The MD7 subwoofer also employs JBL's Vented Gap Cooling™ that provides immediate heat transfer for reduced operating temperatures. The result of these technologies is consistent sound quality even at non-stop, mega-club volumes

MARQUIS DANCE CLUB SERIES



specifications

	MD1	MD2	MD3	MD7
SYSTEM TYPE	Dual JBL Selenium Super Tweeters	High Power Mid-High Loudspeaker System	High Power Dual 15" Low-Frequency Loudspeaker	Ultra Long Excursion High Power
DRIVER	Dual ST400	Dual 2169H 8" MF Drivers; 2453H-SL HF Driver	Dual 2265H Woofers	Dual 18" Subwoofer
POWER RATING (2 hrs. Continuous Pink Noise)	100W	MF 700W; HF 100W	1600W	4000W
SENSITIVITY: 1 W, 1 m	108 dB SPL	MF 109 dB SPL; HF 113 dB SPL	103 dB SPL	100 dB SPL (25 - 150 Hz)
FREQUENCY RANGE (-10 dB)	5.5 kHz - 20 kHz	270 Hz - 20 kHz	60 Hz - 400 Hz	20 Hz - 200 Hz
FREQUENCY RESPONSE (±3 dB)	6.5 kHz - 20 kHz	320 Hz - 20 kHz	70 Hz - 350 Hz	25 Hz - 150 Hz
DIMENSIONS (H x W x D)	184.2 x 421.3 x 305.8 mm	1142.8 x 844.8 x 508.5 mm	1142.8 x 599.8 x 762.5 mm	762 x 1121.7 x 965.7 mm
NET WEIGHT (each)	7.2 x 16.6 x 12 in	45 x 33.3 x 20 in	45 x 22 x 30 in	30 x 44.2 x 38 in
	8.2 kg (18 lb)	52.2 kg (115 lb)	73.0 kg (161 lb)	108.0 kg (238.0 lb)
	MD52	MD55	MD46	MD49
SYSTEM TYPE	Medium Power 90 x 50 12" 2-way Full-Range Loudspeaker	Medium Power 90 x 50 15" 2-way Full-Range Loudspeaker	High Power 60 x 40 Dual 15" 4-way Full-Range Loudspeaker System	High Power 90 x 50 Dual 15" 4-way Full-Range Loudspeaker System
DRIVER	262H Woofer; 2408H-1 HF Driver	265H Woofer; 2408H-1 HF Driver	LF: Dual 2265H; MF: CMCD-82H; HF: 2432H; UHF: Dual ST400 ST	LF: Dual 2265H; MF: CMCD-82H; HF: 2432H; UHF: Dual ST400 ST
POWER RATING (2 hrs. Continuous Pink Noise)	550W	550W	LF: 2000W; MF: 35; HF: 100W; UHF: 100W	LF: 2000W; MF: 350W; HF: 100W; UHF: 100W
SENSITIVITY: 1 W, 1 m	96 dB SPL	97 dB SPL	LF: 98 dB SPL; MF: 108 dB SPL; HF: 113 dB SPL; UHF: 107 dB SPL	LF: 98 dB SPL; MF: 108 dB SPL; HF: 113 dB SPL; UHF: 107 dB SPL
FREQUENCY RANGE (-10 dB)	39 Hz - 20 kHz	39 Hz - 20 kHz	42 Hz - 20 kHz	42 Hz - 20 kHz
FREQUENCY RESPONSE (±3 dB)	53 Hz - 19 kHz	51 Hz - 19 kHz	48 Hz - 19 kHz	48 Hz - 19 kHz
DIMENSIONS (H x W x D)	711.2 x 369.4 x 400.1 mm	781.1 x 417.9 x 457.7 mm	1524 x 559.8 x 655.3 mm	1524 x 559.8 x 655.3 mm
NET WEIGHT (each)	28 x 14.5 x 15.8 in	30.8 x 16.5 x 18 in	60 x 22.0 x 25.9 in	60 x 22.0 x 25.9 in
	20.6 kg (45.5 lb)	23.8 kg (52.5 lb)	65.8 kg (145 lb)	65.8 kg (145 lb)